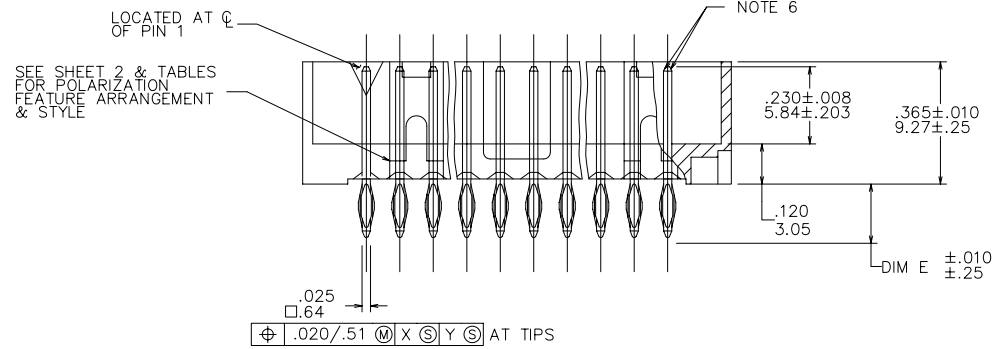
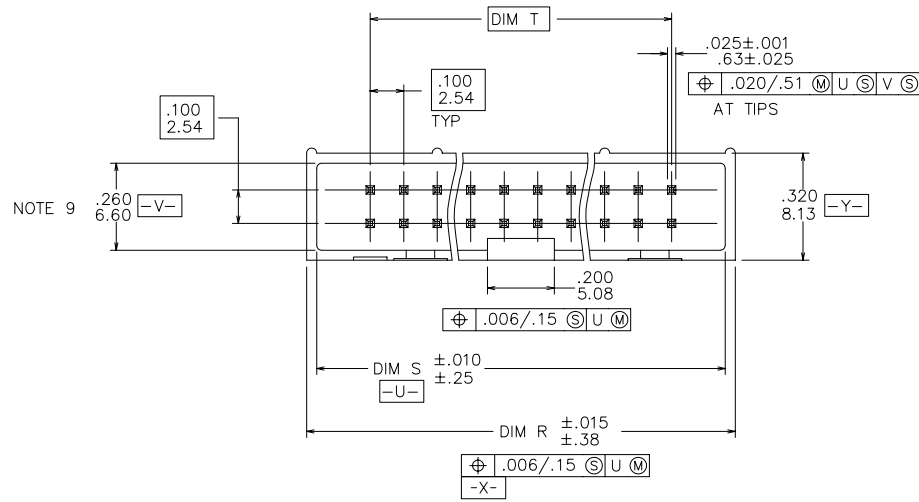


PRODUCT NUMBER
SEE TABLE



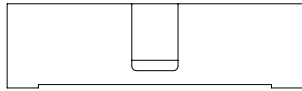
SEE SHEET 2 & TABLES FOR POLARIZATION FEATURE ARRANGEMENT & STYLE

mat'l. code				surface ISO 1302 ✓		tolerance ISO 406 ISO 1101		projection INCH/MM		product family SLIM LINE	
itr				tolerances unless otherwise specified						title	
E	V61462	MDF	10/14/96	angles	linear	.XXX±.01/XX±0.3	INCH/MM		PRESS FIT HEADER ASS'Y		
F	V61785	SAR	12/13/96	0°±2'		.XXX±.005/XX±0.13	scale 4:1		SLIM LINE 4 WALL		
G	V61745	MDF	1/23/97			.XXX±.0020/XXX±0.051			sheet 1 of 5 size		
H	V20526	RGD	3/18/02	dr	M. CLUSER	8/27/87			dwg no		
J	M05-0099	MHT	5/24/05	enrg	B. TROSTLE	8/27/87			68712		
K	M07-0116	AGS	2/24/07	chr	R. DOUTRICH	10/6/88			A3		
L	M07-0489	MHT	11/13/07	appd	R. DOUTRICH	10/6/88			type Product Customer Drawing		
sheet		revision		L	L	L	L	L			
index		sheet		1	2	3	4	5			

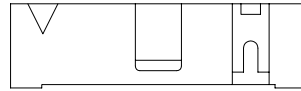
PRODUCT NUMBER
SEE TABLE

NOTES:

- ① MOLDING MATERIAL: 30% GLASS FILLED POLYESTER FLAME RETARDENT PER UL94V-O. COLOR-BLUE.
- ② TERMINAL MATERIAL: PHOSPHOR BRONZE.
- ③ REFER TO TA 556 FOR APPLICATION, TOOLING AND INSTRUCTIONS.
4. UNLESS OTHERWISE SPECIFIED, 1° MAX DRAFT PERMISSIBLE ON ALL SURFACES.
5. LOGO LOCATION OPTIONAL.
- ⑥ TWO NON-CRITICAL SIDES OF PIN TIP NOT PLATED TYP BOTH ENDS.
7. 3 LBS / .36 KG PIN RETENTION IN BOTH DIRECTIONS.
8. RECOMMENDED PLATED-THRU-HOLE DIMENSIONS ARE:
 DRILLED HOLE: .0453/1.151±.0010/.025 DIA
 COPPER PLATING THICKNESS: .001/.025 TO .003/.076
 SOLDER PLATING THICKNESS: .0003/.076 TO .0007/.0178
 OVERALL HOLE SIZE: .040/1.016±.003/.076 DIA
- ⑨ ON HEADERS 2 X 20 AND LARGER THE .260/6.6 DIM HAS A MINIMUM SIZE OF .240/6.1.
- ⑩ PIN PLATING-DUPLEX- 30u"/.076u Au OVER 50u"/1.27uNi ON CONTACT AREA OF PIN AND 40u"/1.02u-80u"/2.03u TIN/LEAD ON PRESS FIT AREA OF PIN.
 LEAD FREE: PIN PLATING-DUPLEX- 30u"/.076u Au OVER 50u"/1.27uNi ON CONTACT AREA OF PIN AND 40u"/1.02u-80u"/2.03u PURE TIN ON PRESS FIT AREA OF PIN.
- ⑪ PART NUMBER WITH "LF" SUFFIX AT THE END ARE LEAD FREE.
12. THIS PRODUCT MEETS EUROPEAN UNION DIRECTIVES AND OTHER COUNTRY REGULATION AS DESCRIBED IN GS-22-008.
- ⑬ PLATING OPTIONS:
MAY BE EITHER GOLD OR GXT PLATED AT MANUFACTURER'S OPTION.
14. THE PRODUCT IS NOT INTENDED TO BE EXPOSED TO A MANUFACTURING SOLDER PROCESS.



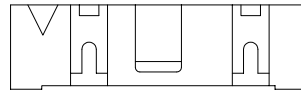
2 X 5
STYLE A



2 X 7
STYLE C



2 X 5
STYLE B



2 X 8 & LARGER
STYLE D



FCIconnect.com

Copyright FCI

mat'l. code		surface ISO 1302 ✓		tolerance ISO 406 ISO 1101		projection ⊕		product family SLIM LINE	
ltr		ecn no dr		date		tolerances unless otherwise specified		title	
L						angles linear .XX±.01/XX±0.3 .XXX±.005/XX±0.13 .XXXX±.0020/XXX±0.051		INCH/MM PRESS FIT HEADER ASS'Y SLIM LINE 4 WALL	
						0'±2'		scale 4:1	
				dr M. CLUSER 8/27/87				dwg no sheet 2 of 5 size	
				enr B. TROSTLE 8/27/87				68712 A3	
				chr R. DOUTRICH 10/6/88				type Product Customer Drawing	
				appd R. DOUTRICH 10/6/88					
sheet index		revision sheet							

PRODUCT NUMBER	NO OF POS	DIM R	DIM S	DIM T	DIM E	TERMINAL PLATING NOTE 13	STYLE
68712-001LF	2 X 5	.78/19.81	.72/18.28	.400/10.16	.160/4.06	30u"/.76u Au OVER 50u"/1.27 Ni	A
-002LF					.160/4.06	30u"/.76u GXT OVER 50u"/1.27u Ni	
-003LF					.610/15.49	30u"/.76u Au OVER 50u"/1.27 Ni	
-004LF					.610/15.49	30u"/.76u GXT OVER 50u"/1.27u Ni	
-005LF					.733/18.62	30u"/.76u Au OVER 50u"/1.27 Ni	
-006LF	2 X 5	.78/19.81	.72/18.28	.400/10.16	.733/18.62	30u"/.76u GXT OVER 50u"/1.27u Ni	A
-007LF	2 X 7	.98/24.89	.92/23.37	.600/15.24	.160/4.06	30u"/.76u Au OVER 50u"/1.27 Ni	C
-008LF					.160/4.06	30u"/.76u GXT OVER 50u"/1.27u Ni	
-009LF					.610/15.49	30u"/.76u Au OVER 50u"/1.27 Ni	
-010LF					.610/15.49	30u"/.76u GXT OVER 50u"/1.27u Ni	
-011LF					.733/18.62	30u"/.76u Au OVER 50u"/1.27 Ni	
-012LF	2 X 7	.98/24.89	.92/23.37	.600/15.24	.733/18.62	30u"/.76u GXT OVER 50u"/1.27u Ni	C
-013LF	2 X 8	1.08/27.43	1.02/25.91	.700/17.78	.160/4.06	30u"/.76u Au OVER 50u"/1.27 Ni	D
-014LF					.160/4.06	30u"/.76u GXT OVER 50u"/1.27u Ni	
-015LF					.610/15.49	30u"/.76u Au OVER 50u"/1.27 Ni	
-016LF					.610/15.49	30u"/.76u GXT OVER 50u"/1.27u Ni	
-017LF					.733/18.62	30u"/.76u Au OVER 50u"/1.27 Ni	
-018LF	2 X 8	1.08/27.43	1.02/25.91	.700/17.78	.733/18.62	30u"/.76u GXT OVER 50u"/1.27u Ni	D
-019LF	2 X 10	1.28/35.51	1.22/30.99	.900/22.86	.160/4.06	30u"/.76u Au OVER 50u"/1.27 Ni	D
-020LF					.160/4.06	30u"/.76u GXT OVER 50u"/1.27u Ni	
-021LF					.610/15.49	30u"/.76u Au OVER 50u"/1.27 Ni	
-022LF					.610/15.49	30u"/.76u GXT OVER 50u"/1.27u Ni	
-023LF					.733/18.62	30u"/.76u Au OVER 50u"/1.27 Ni	
68712-024LF	2 X 10	1.28/35.51	1.22/30.99	.900/22.86	.733/18.62	30u"/.76u GXT OVER 50u"/1.27u Ni	D



FCIconnect.com

Copyright FCI

mat'l. code		surface ISO 1302 ✓		tolerance ISO 406 ISO 1101		projection ⊕		product family SLIM LINE	
ltr		ecn no		dr		date		title	
L								PRESS FIT HEADER ASS'Y SLIM LINE 4 WALL	
								scale 4:1	
								dwg no 68712	
								sheet 3 of 5 size A3	
								type Product Customer Drawing	
sheet index		revision sheet							



form: A3 1 2 3 4 5 6

PRODUCT NUMBER	NO OF POS	DIM R	DIM S	DIM T	DIM E	TERMINAL PLATING NOTE 13	STYLE
68712-025LF	2 X 12	1.48/37.59	1.42/36.07	1.100/27.94	.160/4.06	30u"/.76u Au OVER 50u"/1.27 Ni	D
-026LF					.160/4.06	30u"/.76u GXT OVER 50u"/1.27u Ni	
-027LF					.610/15.49	30u"/.76u Au OVER 50u"/1.27 Ni	
-028LF					.610/15.49	30u"/.76u GXT OVER 50u"/1.27u Ni	
-029LF					.733/18.62	30u"/.76u Au OVER 50u"/1.27 Ni	
-030LF	2 X 12	1.48/37.59	1.42/36.07	1.100/27.94	.733/18.62	30u"/.76u GXT OVER 50u"/1.27u Ni	D
-031LF	2 X 13	1.58/40.13	1.52/38.61	1.200/30.48	.160/4.06	30u"/.76u Au OVER 50u"/1.27 Ni	D
-032LF					.160/4.06	30u"/.76u GXT OVER 50u"/1.27u Ni	
-033LF					.610/15.49	30u"/.76u Au OVER 50u"/1.27 Ni	
-034LF					.610/15.49	30u"/.76u GXT OVER 50u"/1.27u Ni	
-035LF					.733/18.62	30u"/.76u Au OVER 50u"/1.27 Ni	
-036LF	2 X 13	1.58/40.13	1.52/38.61	1.200/30.48	.733/18.62	30u"/.76u GXT OVER 50u"/1.27u Ni	D
-037LF	2 X 15	1.78/45.21	1.72/43.69	1.400/35.56	.160/4.06	30u"/.76u Au OVER 50u"/1.27 Ni	D
-038LF					.160/4.06	30u"/.76u GXT OVER 50u"/1.27u Ni	
-039LF					.610/15.49	30u"/.76u Au OVER 50u"/1.27 Ni	
-040LF					.610/15.49	30u"/.76u GXT OVER 50u"/1.27u Ni	
-041LF					.733/18.62	30u"/.76u Au OVER 50u"/1.27 Ni	
-042LF	2 X 15	1.78/45.21	1.72/43.69	1.400/35.56	.733/18.62	30u"/.76u GXT OVER 50u"/1.27u Ni	D
-043LF	2 X 17	1.98/50.29	1.92/48.77	1.600/40.64	.160/4.06	30u"/.76u Au OVER 50u"/1.27 Ni	D
-044LF					.160/4.06	30u"/.76u GXT OVER 50u"/1.27u Ni	
-045LF					.610/15.49	30u"/.76u Au OVER 50u"/1.27 Ni	
-046LF					.610/15.49	30u"/.76u GXT OVER 50u"/1.27u Ni	
-047LF					.733/18.62	30u"/.76u Au OVER 50u"/1.27 Ni	
68712-048LF	2 X 17	1.98/50.29	1.92/48.77	1.600/40.64	.733/18.62	30u"/.76u GXT OVER 50u"/1.27u Ni	D



FCIconnect.com

Copyright FCI

mat'l. code		surface ISO 1302 <input checked="" type="checkbox"/>		tolerance ISO 406 ISO 1101		projection 		product family SLIM LINE	
ltr		ecn no		date		tolerances unless otherwise specified		title	
L						angles linear XX±.01/XX±.03 XXX±.005/XX±.013 XXXX±.0020/XXX±.051		INCH/MM scale 4:1	
						dr M. CLUSER 8/27/87		dwg no 68712 sheet 4 of 5 size A3	
						enr B. TROSTLE 8/27/87			
						chr R. DOUTRICH 10/6/88			
						appd R. DOUTRICH 10/6/88		type Product Customer Drawing	
sheet index		revision sheet							

form: A3 1 2 3 4 5 6

PRODUCT NUMBER	NO OF POS	DIM R	DIM S	DIM T	DIM E	TERMINAL PLATING NOTE 13	STYLE
68712-049LF	2 X 20	2.28/57.91	2.22/56.39	1.900/48.26	.160/4.06	30u"/.76u Au OVER 50u"/1.27 Ni	D
-050LF					.160/4.06	30u"/.76u GXT OVER 50u"/1.27u Ni	
-051LF					.610/15.49	30u"/.76u Au OVER 50u"/1.27 Ni	
-052LF					.610/15.49	30u"/.76u GXT OVER 50u"/1.27u Ni	
-053LF					.733/18.62	30u"/.76u Au OVER 50u"/1.27 Ni	
-054LF	2 X 20	2.28/57.91	2.22/56.39	1.900/48.26	.733/18.62	30u"/.76u GXT OVER 50u"/1.27u Ni	D
-055LF	2 X 22	2.48/62.99	2.42/61.47	2.100/53.34	.160/4.06	30u"/.76u Au OVER 50u"/1.27 Ni	D
-056LF					.160/4.06	30u"/.76u GXT OVER 50u"/1.27u Ni	
-057LF					.610/15.49	30u"/.76u Au OVER 50u"/1.27 Ni	
-058LF					.610/15.49	30u"/.76u GXT OVER 50u"/1.27u Ni	
-059LF					.733/18.62	30u"/.76u Au OVER 50u"/1.27 Ni	
-060LF	2 X 22	2.48/62.99	2.42/61.47	2.100/53.34	.733/18.62	30u"/.76u GXT OVER 50u"/1.27u Ni	D
-061LF	2 X 25	2.78/70.61	2.72/69.09	2.400/60.96	.160/4.06	30u"/.76u Au OVER 50u"/1.27 Ni	D
-062LF					.160/4.06	30u"/.76u GXT OVER 50u"/1.27u Ni	
-063LF					.610/15.49	30u"/.76u Au OVER 50u"/1.27 Ni	
-064LF					.610/15.49	30u"/.76u GXT OVER 50u"/1.27u Ni	
-065LF					.733/18.62	30u"/.76u Au OVER 50u"/1.27 Ni	
-066LF	2 X 25	2.78/70.61	2.72/69.09	2.400/60.96	.733/18.62	30u"/.76u GXT OVER 50u"/1.27u Ni	D
-067LF	2 X 30	3.28/83.31	3.22/81.79	2.900/73.66	.160/4.06	30u"/.76u Au OVER 50u"/1.27 Ni	D
-068LF					.160/4.06	30u"/.76u GXT OVER 50u"/1.27u Ni	
-069LF					.610/15.49	30u"/.76u Au OVER 50u"/1.27 Ni	
-070LF					.610/15.49	30u"/.76u GXT OVER 50u"/1.27u Ni	
-071LF					.733/18.62	30u"/.76u Au OVER 50u"/1.27 Ni	
-072LF	2 X 30	3.28/83.31	3.22/81.79	2.900/73.66	.733/18.62	30u"/.76u GXT OVER 50u"/1.27u Ni	
-073LF	2 X 17	1.98/50.29	1.92/48.77	1.600/40.64	.160/4.06	50u"/1.27u Au OVER 50u"/1.27u Ni	D
-074LF	2 X 5	.78/19.81	.72/18.29	.400/10.16	.110/2.79	30u"/.76u GXT OVER 50u"/1.27u Ni	A
-075LF	2 X 10	1.28/32.51	1.22/30.99	.900/22.86	.110/2.79	30u"/.76u GXT OVER 50u"/1.27u Ni	D
-076LF	2 X 12	1.48/37.59	1.42/36.07	1.100/27.94	.110/2.79	30u"/.76u GXT OVER 50u"/1.27u Ni	D
68712-201LF	2 X 5	.78/19.81	.72/18.29	.400/10.16	.160/4.06	SEE NOTE 10	A
68712-201	2 X 5	.78/19.81	.72/18.29	.400/10.16	.160/4.06	SEE NOTE 10	A
68712-219LF	2 X 10	1.28/32.51	1.22/30.99	.900/22.86	.160/4.06	SEE NOTE 10	D
68712-219	2 X 10	1.28/32.51	1.22/30.99	.900/22.86	.160/4.06	SEE NOTE 10	D



FCIconnect.com

Copyright FCI

mat'l. code		surface ISO 1302 <input checked="" type="checkbox"/>	tolerance ISO 406 ISO 1101	projection 	product family SLIM LINE
ltr	ecn no	dr	date	tolerances unless otherwise specified	title
L				angles linear XXX±.01/XX±.03 XXXX±.005/XX±.013 XXXXX±.0020/XXX±.0051	PRESS FIT HEADER ASS'Y SLIM LINE 4 WALL
			0'±2'	scale 4:1	dwg no 68712
			dr M. CLUSER 8/27/87		sheet 5 of 5 size A3
			enr B. TROSTLE 8/27/87		type Product Customer Drawing
			chr R. DOUTRICH 10/6/88		
			appd R. DOUTRICH 10/6/88		
sheet index	revision sheet				